

A DIGITAL ROADMAP FOR YOUR COMPANY

TECH-SAVVY WORKERS ARE CHEAPER THAN ANOTHER "SMART" MACHINE

GET STARTED ON THE RIGHT PATH

A brief online assessment will help prioritize your company's digital gaps in marketing, operations, and workforce to bring value to your company and your workers.

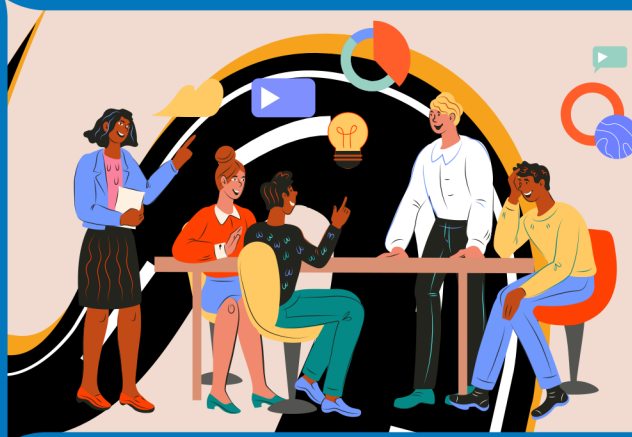


PRIORITIZE WHERE YOU ARE "TECH-SMART"

Schedule a 30-minute strategy meeting to discuss your technology wants and needs along with an overview of how your workers can help you bridge the digital divide.

IT'S ALL ABOUT THE BASE...LINE

Using the interview and assessment, you and your select employees meet with the Work-Tech team to establish your company's digital baseline of gaps and opportunities.



FILLING IN THE TECH-GAPS

Work-Tech uses the provided data to establish your current state of digital readiness and identify opportunities for your future growth and development via improved digital competency.

YOUR COMPANY'S DIGITAL ROADMAP

The Work-Tech team will provide options for do-it-yourself, low-cost ideas, or in-depth digital strategies for your company to implement.



GET ON THE WORK-TECH ROAD

Contact Work-Tech to help your company start down the road to a digital transformation



412-342-0534

work-tech@steelvalley.org

www.work-tech.org